



Ophthalmic YAG and SLT Laser System **YC-200 S plus**
Ophthalmic YAG Laser System **YC-200**



THE ART OF EYE CARE

YC-200 *S plus* YC-200

Right on the Mark

"Precision treatments with the YAG/SLT laser"

NIDEK, a leading manufacturer of modern YAG lasers, introduces the advanced YAG and SLT combination laser, YC-200 S plus, and the enhanced YAG laser, YC-200.

A suite of technologies has been incorporated in these lasers to achieve seamless function and greater precision. Features for targeting pathology, accurate energy delivery, and operative assist functions allow the surgeon to deliver treatments "Right on the Mark".



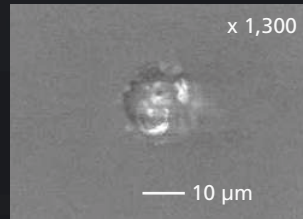
Precise Treatment

Refined Laser Delivery with Lower Energy

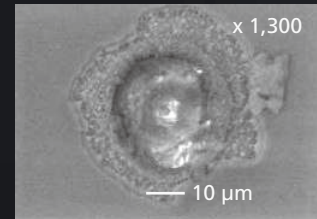
The YC-200 S plus / YC-200 achieves 1.6 mJ plasma threshold in air*1, delivering accurate and robust treatments with lower energy.

1.6 mJ

Comparison of laser energy spots*2 between the YC-200 and the previous model



YC-200



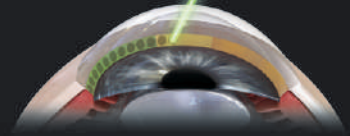
Previous model

*1 A plasma threshold of 1.6 mJ is achieved in ordinary room conditions (in-house data).

*2 The same laser delivery parameters were used on both samples of photo paper.

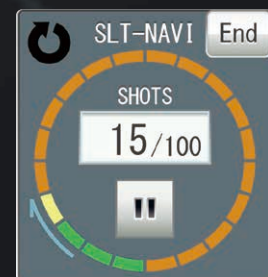
SLT Mode

The YC-200 S plus offers an advanced SLT mode. SLT is highly effective for treating open angle glaucoma.



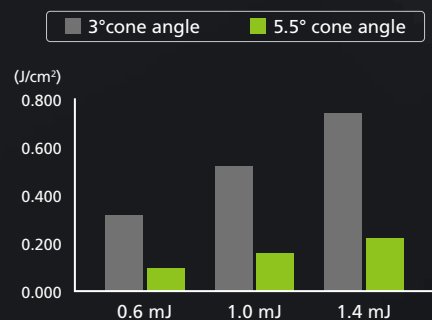
SLT-NAVI

The SLT-NAVI feature presents an intuitive display on the progress of laser treatment, providing the surgeon with important feedback.



Cornea-friendly SLT

With a 5.5° cone angle, the YC-200 S plus is designed to decrease energy density on the cornea to spare tissue from repeated treatments. The energy density on the cornea is reduced by more than one-third with a 5.5° cone angle compared to a 3.0° cone angle.



Comparison of energy density on the cornea*

*Data from theoretical simulations

Exact Targeting

Clear and Sharp Field of View

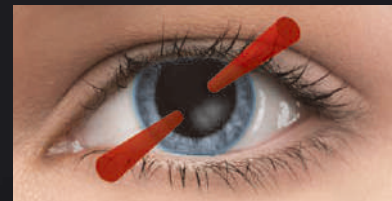
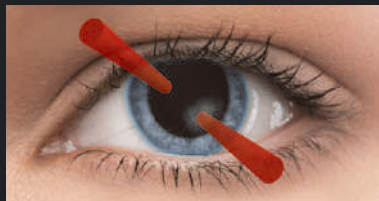
An improved optical design that optimizes resolution and contrast, and an expanded focal depth provide a clear view of pathology and treatment. A unique illumination system with an LED light source results in a bright, near-natural view that minimizes aberration. The sharp, clear optics provide an enhanced view of the treatment area.



Precise Aiming Beam

■ Motorized Rotatable Aiming Beam (YAG Mode)

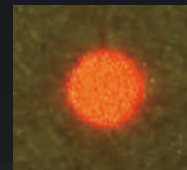
The dual aiming beam offers superior targeting with a 360° rotating aiming beam that can avoid corneal opacities and achieve more accurate focusing.



■ Precise Edge Aiming Beam (SLT Mode*)

Parfocality delivers a clear view for easier focusing of the aiming beam through the contact lens.

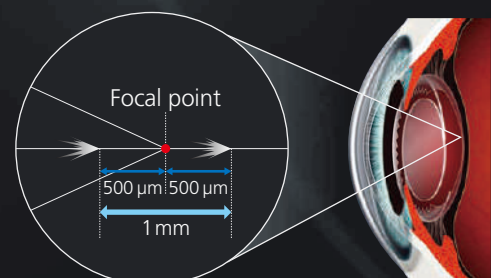
*Available for the YC-200 S plus



Wide Range of Focus Shift

The focus shift enables a 500 μm anterior or posterior axial shift of the focal point of the YAG laser.

A change in 25 μm increments achieves precise treatments irrespective of the severity of pathology.



Smooth Operation Workflow

Optimized Operating Distance

Maximized working distance allows easier manipulation of the contact lens, and the short operating distance decreases surgeon fatigue during treatment.

*Operating distance denotes the distance from the microscope eyepiece to the patient's eye.



Unique Joystick

■ Utility S-switch

The S-switch on the joystick changes treatment settings without shifting gaze from the oculars. The ease of use allows surgeons an increased level of comfort during treatment.

■ Remarkably Smooth Motorized Joystick

To enhance surgeon comfort, the YC-200 includes the acclaimed motorized joystick used in other NIDEK devices.



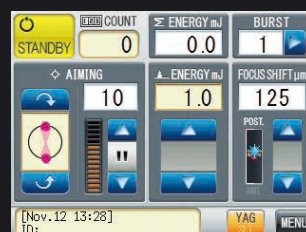
Improved Slit Lamp Functionality

The same control functions as the general ZEISS-type slit lamp enhances operability.



Control Box and Key Card

An intuitive graphic user interface and easy-to-read touch screen color LCD allow quick and easy setup and verification of treatment parameters. An SD card starts the unit, enables software upgrades, and saves treatment summaries.



YC-200 S plus / YC-200 Specifications

Model	YC-200 S plus	YC-200
YAG mode		
Laser source	Q-switched Nd:YAG	
Wavelength	1,064 nm	
Pulse width	3 ns	
Pulse repetition rate	3 Hz (single) / 1.5 Hz (burst)	
Output energy	0.3 to 10.0 mJ / pulse	←
Burst mode	1, 2 and 3 pulses per trigger	
Spot size	8 µm	
Cone angle	16°	
Focus shift	0 to ±500 µm	
Aiming beam	635 nm / OFF, max. 25 µW	
SLT mode		
Laser source	Q-switched, frequency doubled Nd:YAG	
Wavelength	532 nm	
Pulse width	3 ns	
Pulse repetition rate	3 Hz	
Output energy	0.3 to 3.0 mJ / pulse	Not available
Spot size	400 µm	
Cone angle	5.5°	
Aiming beam	635 nm / OFF, max. 0.3 mW	
Slit lamp		
Illumination	LED lamp	←
Magnification (field of view)	5x (40.7 mm), 8x (25.7 mm), 12.5x (16.1 mm), 20x (10.1 mm), 32x (6.4 mm)	
Power supply	100 to 240 V AC, 50/60 Hz	←
Power consumption	100 VA	←
Dimensions/mass	346 (W) x 422 (D) x 577 (H) mm / 18 kg 13.6 (W) x 16.6 (D) x 22.7 (H)" / 39.7 lbs.	346 (W) x 422 (D) x 577 (H) mm / 17 kg 13.6 (W) x 16.6 (D) x 22.7 (H)" / 37.5 lbs.
Optional accessories	Foot switch, Stand for control box, Safety goggles, Green laser photocoagulator combination delivery unit (NIDEK GYC-500)	Foot switch, Stand for control box, Safety goggles, Illumination tower (tilting), Green laser photocoagulator combination delivery unit (NIDEK GYC-500)



*The table in the image is not included or sold with the YC-200 S plus / YC-200.



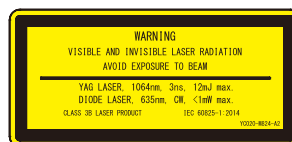
More clinical information available online at the NIDEK Education page

For more clinical information, please visit the Education page on the NIDEK website. This site allows access to case reports, journal articles, and video presentations.



<https://www.nidek-intl.com/education/>

Product/model name: Ophthalmic YAG Laser System YC-200
Brochure and listed features of the device are intended for non-US practitioners.
Specifications may vary depending on circumstances in each country.
Specifications and design are subject to change without notice.



Eye & Health Care
NIDEK CO., LTD.

HEAD OFFICE
(International Div.)
34-14 Maehama,
Hiroishi-cho, Gamagori,
Aichi 443-0038, JAPAN
TEL: +81-533-67-8895
URL: www.nidek.com
[Manufacturer]

TOKYO OFFICE
(International Div.)
3F Sumitomo Fudosan Hongo
Bldg., 3-22-5 Hongo, Bunkyo-ku,
Tokyo 113-0033, JAPAN
TEL: +81-3-5844-2641
URL: www.nidek.com

NIDEK INC.
2040 Corporate Court,
San Jose, CA 95131, U.S.A.
TEL: +1-408-468-6400
+1-800-223-9044
(US Only)
URL: usa.nidek.com

NIDEK S.A.
Ecoparc,
9 rue Benjamin Franklin,
94370 Sucy En Brie,
FRANCE
TEL: +33-1-49 80 97 97
URL: www.nidek.fr

NIDEK TECHNOLOGIES S.R.L.
Via dell'Artigianato,
6/A, 35020 Albignasego (Padova),
ITALY
TEL: +39 049 8629200/8626399
URL: www.nidektechnologies.it

NIDEK (SHANGHAI) CO., LTD.
Rm3205, Shanghai Multi
Media Park, No.1027 Chang
Ning Rd, Chang Ning District,
Shanghai, CHINA 200050
TEL: +86 021-5212-7942
URL: www.nidek-china.cn

NIDEK SINGAPORE PTE. LTD.
51 Changi Business Park
Central 2, #06-14,
The Signature 486066,
SINGAPORE
TEL: +65 6588 0389
URL: www.nidek.sg